

Planter

Covering Disc Assembly



3 lbs each

Part #	Description	Price \$
1277891CH	IH 900 Series	22.95

Drill Chains



Part #	Application	Price \$
522550152	Universal Drag Chain - 2 lbs	4.15

Gauge Wheel Tires

Part #	Description	Price \$
128633CH	IH 4.5" x 16" 8 lbs each	24.95
A22884H	JD - Replaces A22884, A84050, GD1086	23.95



Drill Disc Opener Assemblies

Part #	Application	Price \$
90850CH	Case LH - 800, 900, 950, 1200 Planters 5400, 5500 Drills. Taper on same side as hub	25.95
90851CH	Case RH - Same as Above. Taper on side opposite hub	25.95
AA20242H	JD Seed Disk Opener	23.95
GA8324H	Kinze "Super Thick" Seed Disk Opener	26.75



Gauge Wheel Halves



Part #	Description	Price \$
128616CH	IH - White	10.99
A22780H	JD Yellow - Fits AA32046H assembly	11.89

Closing Wheels



John Deere 7000 Closing Wheel Lists for over \$44 - Save Big with T.H.E.



Part #	Wt	Application	Price \$
AA33297H	6	7000 7100	29.75
AA39968H	5	1700 Series MaxEmerge Plus XP & Pro 1530/35, Kinze 3000	31.95
AA34211H	5	7200 7300 1760/80 MaxEmerge II up to 1996	31.95
PWA2135	3	2 x 13 - Single Stem Bearing - Drills	40.93
AN130058H	5	4 x 12 - Smoth Crown Tire - Single Stem Bearing - Drills	28.83

Replacement Seed Tubes

- Seed tube - less sensor
- Factory predrilled holes for fast mounting



Part #	Wt	Description	Price \$
A25925H	.4	7000, 7100	3.99
A48302H	.4	7200, 7300, 7340	3.95
A56784H	.3	1700 - Large Monitor Hole	5.95

Monitor Sensor Brush

Helps keep sensor clean and functioning properly



Part Number	Description	Price \$
AA36824H	Monitor Sensor Brush	3.99

Graphite & Talc Powder Graphite

80/20 Talc-Graphite Mix



- Designed for treated seed
- Used in both gravity flow and air planters
- Reduces moisture issues
- increases efficiency
- Lubricates seed and equipment
- Non toxic and high purity for less meter wear
- Use 4-6 oz. when hopper is filled with seed.



- Increases plant population
- Easiest way to apply seed-flow lubricant
- Helps prevent "bridging" of seeds in the planter
- Helps seed flow through high-speed planters
- Reduces wear on plates

Talc



- Increases plant population per acre
- Reduces moisture created by vacuum planters
- Helps seed flow smooth & even
- Reduces wear on vacuum meter parts

Part #	Description	Price \$
EZTG	8 lb container	25.93

Part #	Description	Price \$
EZG1	1 lb bottle	4.65
EZG5	5 lb container	15.95

Part #	Description	Price \$
EZT	8 lb container	17.10

New & Featured Items

Case - IH

Drill Disc Opener Assemblies



Part #	Application	Price \$
90850CH	LH - 800, 900, 950, 1200 Planters 5400, 5500 Drills	25.95
90851CH	RH - Same as Above	25.95

Disc Opener Bearings



Part #	Application	Price \$
JD8535H	Drills 510, 620, 5100, 6200, 7100, 7200	4.85
AA21480H	5200, 5300, 5400, 6300	4.95

Gauge Wheel Assembly



Part #	Description	Price \$
1279444CH	4.5" x 16" Complete	61.73

Gauge Wheel Tire



4.5" x 16"
8 lbs each

Part #	Price \$
128633CH	24.95

Gauge Wheel Half



Weight 2 lbs.

Part #	Price \$
128616CH	10.99

Gauge Wheel Bearing



1 lb each

Part #	Price \$
AA35741H	9.95

Notched Covering Discs



- Disc Assembly
- Includes Cap

Weight 2.5 lbs.

Part #	Description	Price \$
ND6000H	LH	24.95
ND6001H	RH	24.95

Covering Disc Assembly



3 lbs each

Part #	Description	Price \$
1277891CH	900 Series	22.95

Convert your 800 Planter to the New 900 Press Wheel



6.5 x 12 Crown Tread traction style for 800/900
Weight 7 lbs.

Part #	Price \$
90854CH	34.83

Press Wheel Spring



Weight 2 lbs.

Part #	Description	Price \$
147425CH	800-900 closing wheel Spring	15.40

Press Wheel Tires and Rims



Part #	Wt.	Size	Description	Price \$
412	4 lbs	4 x 12	Tire Smooth crown	12.24
526768RH	4 lbs	4 x 12	White wheel 1/2	6.05

Rear Press Wheel Bearing

IH List Price is over \$29!
Buy from T.H.E. Company and save!

Part #	Price \$
1254203CH	18.95

Infrared High Speed Sensor

Planters and Drills

Sensor for Population Count

Weight 1 lb.



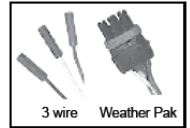
Part Number	Description	Price \$
IHIR1003W	3 wire	77.95
IHIR100WP	Weather Pak	77.95

Seed Flow Sensor

Planters and Drills

Seed Flow Sensor

Weight 1 lb.



Part Number	Description	Price \$
IH1013W	3 wire	59.95
IH101WP	Weather Pak	59.95

Seed Opener Bearing

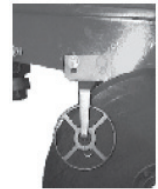


Bearing; replacement for Seed or Fertilizer Opener.
Replaces 1268017C91, 145161C92 or 492757C91.

Part #	Price \$
AA21480H	4.95

Rotating Scrapers

- Simple Design
- Easy Installation
- Long Life
- Dependable Nylatron Bearings



Part #	Wt.	Type	Description	Price \$
IHS105H	1	Outside	IH 800-900 Scraper Assy. Outside	12.00
DS201H	1	Inside	IH/JD Grain Drill Scrapers. Inside	8.25

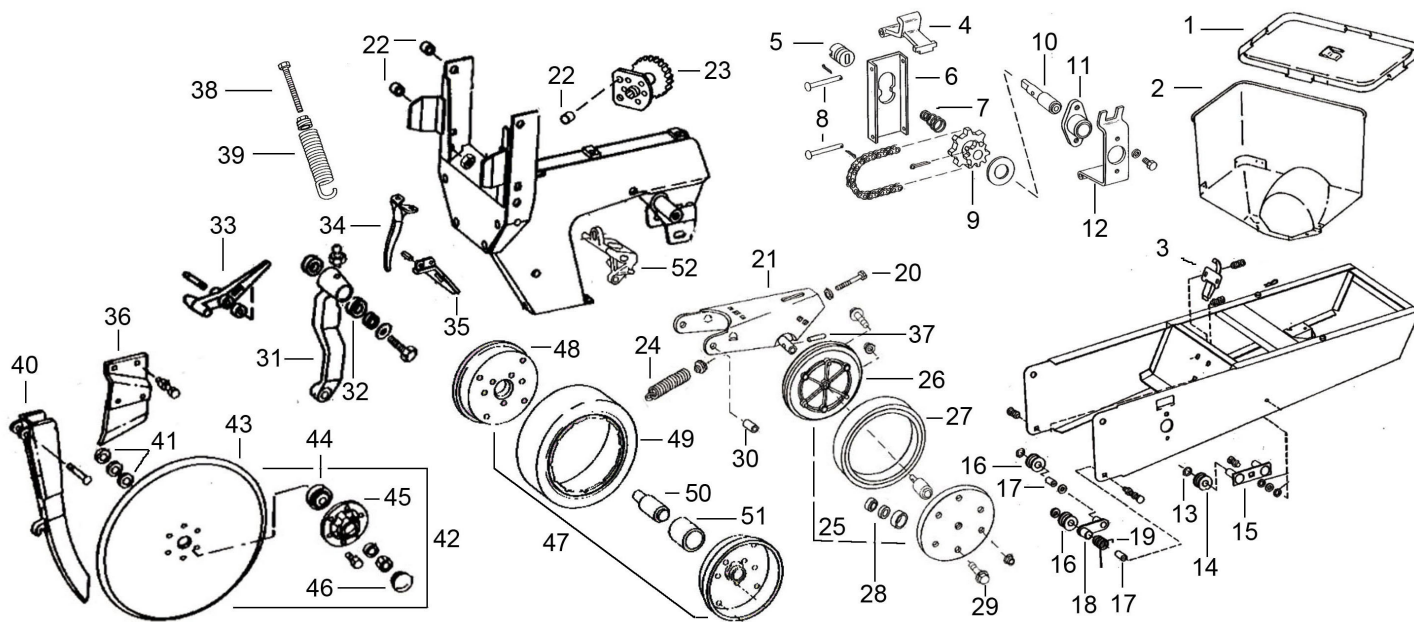
Keeton Seed Firmer

- The right kind of poly to hold its shape, withstand abrasive soil and keep the proper amount of tension over the seed.
- The right "attack" angle to properly guide the seed to the trench.
- The right shape to protect the "V" of the seed trench and to prevent plugging.

Part #	Application	Price \$
P700IH	800 900 950	31.95

John Deere - Kinze

7000 7100 Max-Emerge or Kinze 7200-7300 Max-Emerge 2 Row Unit Parts



Ref #	Part #	Description	Price \$
1	AA26827H	Standard Seed Box Lid	19.45
2	A25663H	Seed Box, Standard 1.6 Bushel	88.98
3	AA22119H	Latch, Seed Box	8.25
4	A25447H	Handle, Seed Drive Release	3.98
5	A24484H	Coupler, Seed Hopper Drive	7.95
6	A25072H	Lever, Seed Hopper Drive Release	4.75
7	B27397H	Spring, Hopper Drive Release	1.10
8	A25068H	Pin, Hopper Drive Release Handle	4.26
9	AA27146H	Sprocket, Seed Hopper Drive	11.50
10	AA22273H	Bearing, Seed Hopper Drive	23.21
11	A24485H	Housing, Seed Hopper Drive	9.56
12	A25073H	Support Bracket, Hopper Drive Bearing	13.61
13	B14203H	Snap Ring, Insecticide Drive idler	1.55
14	B30968H	Plastic idler, Insecticide Drive	1.35
15	AA24633H	Idler Arm, Insecticide Drive	9.09
16	A22838H	Plastic Roller, Hopper Drive Idler 1 9/16" Diameter	0.99
17	N120831H	Spacer Bushing, Hopper Drive Idler	1.25
18	A50564H	Idler Arm, Seed Drive Chain Tightener	4.93
19	A28518H	Tension Spring, Seed Drive Idler	2.70
20	19H2218H	Bolt, Closing Wheel Tension Adjust	2.52
21	AA31217H	Arm, Closing Wheel/with HD hub	42.65
21	AA37552H	Arm, Closing Wheel 7200, 7300, 7340	38.75
21	A69141H	Arm, Closing Wheel 1700 Series	36.56
22	A23789H	Bushing, Row Unit Parallel Arms	1.50
23	AA30654H	Sprocket, Planter Unit Drive w/Bearing	19.08
23	GA1720H	Kinze II, 7/8" Hex Bore	19.59
24	AA23116H	Spring, Closing Wheel Arm	7.75
24	A43609H	Closing Wheel Spring 7200, 7300	6.99
24	A74643H	Closing Wheel Spring Plus, Pro, Xp	7.95
25	AA33297H	Closing Wheel Assembly w/Bearing	29.75
25	AA34211H	7200/7300 Closing Wheel Assembly	31.95
25	AA43898H	Late 7200/7300 Single Bearing	31.95
25	AA39968H	Maximerge Plus	31.95
26	A45576H	Wheel 1/2, Plastic Closing Wheel	8.52
27	A22325H	Tire, 1 x 12 Closing Wheel (Made in USA)	4.98
28	AA35741H	Bearing, Gauge and Closing Wheels 7000	9.95
28	JD8535H	Bearing Set Maximerge II per set	4.85
28	AA35638H	Bearing Kit Maximerge II (bushing & 2 bearings)	18.10

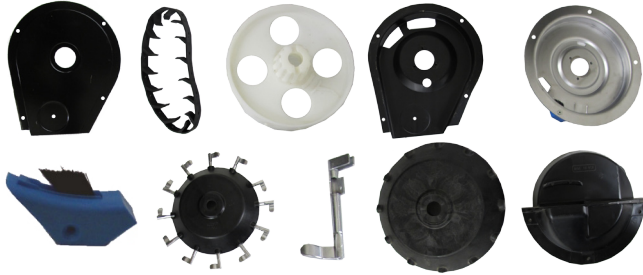
Ref #	Part #	Description	Price \$
29	37H171H	Screw, Closing Wheel	0.46
30	A34723H	Bushing, Closing Wheel Arm Pivot	2.56
30	MBEB275	Bushing, excentric for perfect alignment per row (2)	3.95
--	A48430H	7200 RH Cam Collar per PC (1)	4.14
--	A48290H	7200 LH Washer	2.91
31	A22572H	Gauge Wheel Arm, Right and Left Hand	14.22
32	24H1441H	Washer, Gauge Arm Shim	.40
33	DC7000	Depth Stop, Depth-A-Matic 7000	31.95
33	DC7200	Depth Stop, Depth-A-Matic 7200	39.95
34	A22778H	Guard, Front Seed Opener	7.95
35	A41692H	Guard Scraper, Seed Tube and Opener 7000 thread 7340	3.95
35	A70791H	Roll Pin for Scraper above	0.49
36	AA26443H	Scraper, Disc Opener Right Hand	3.49
36	AA26444H	Scraper, Disc Opener Left Hand	3.49
37	A26311H	Roll Pin, Gauge Wheel Bearing Retaining	0.61
38	19H3106H	Bolt, Down Pressure Spring Adjust	1.95
39	AB10071H	Standard Down Pressure Spring	7.25
39	AA35876H	Heavy Duty Down Pressure Spring	12.30
40	A25925H	Seed Tube, Plastic w/Sensor Hole	3.99
40	A48302H	Seed Tube 7200, 7300, 7340	3.95
40	AA67780H	Seed Tube 1720XP	9.95
41	J16160H	Washer, Seed Disc Opener Shim (Hardened)	0.45
42	AA20242H	Seed Disc Opener Assembly 15 inch	23.95
42	GA8324H	3.5mm Seed Opener HD 7200/7300	25.75
42	AA39968H	3.5mm Double Row Brg Opener 1700	31.95
43	A22991H	Seed Disc Blade Only 15 inch	17.95
44	AA21480H	Bearing, Disk Opener	4.95
45	A30368H	Bearing Retainer, Seed Disk Opener	4.95
46	A22836H	Cap, Disk Opener Bearing	1.25
46	A52024H	Disc Opener Cap Plastic	1.25
47	AA32046H	Gauge Wheel Assembly w/Bearing	61.95
48	A22780H	Wheel 1/2, Depth Gauge Wheel	11.89
49	A22884H	Tire, 4.5 x 16, Depth Gauge Wheel	23.95
50	AA35741H	Bearing, Depth Gauge and Closing Wheel 7000	9.95
51	A25915H	Bushing-Sleeve, Gauge Wheel Bearing	2.00
52	A33879H	Arm Stop Closing Wheel Shank 7000/7100	14.65
52	A53118H	Arm Stop Closing Wheel Shank 7300 Series	19.49

PLANTER

Prices are subject to change, call to verify price & availability!

John Deere - Kinze

Corn Meter Parts



Part #	Description	Price \$
A22796H	Finger Pickup Mechanism Cover	8.93
A22451H	Finger Pickup Mechanism Seed Belt	9.10
A22795H	Finger Pickup Seed Belt Driver	6.34
AA22780H	Finger Pickup Seed Belt Housing	20.25
AA29839H	Finger Pick-up Plate With Brush	32.75
AA35643H	Blue Finger Pick-up Mechanism Brush	4.75
AA60534H	Finger Pick-up Wheel Assembly	38.99
B30275H	Corn Pick-up Finger	1.95
A22307H	Corn Finger Pick-up Holder	7.15
A48383H	Corn Finger Mechanism Cover Housing	11.23

Soybean Feed Cup Parts



Part #	Description	Price \$
AA23366H	Soybean Cup Stud and pin	7.89
AA28036H	Soybean Feed Cup Retainer	13.89
AA26713H	Soybean Feed Cup	14.99
A24641H	Soybean Feed Cup Guide Plate	6.96
AA27100H	Soybean Feed Cup Housing	19.99

Gauge Wheel Parts



Part #	Wt	Description	Price \$
AA35741H	1	Bearing - Replaces AA21015, AA35741, A2022	9.95
A22780H	5.5	Wheel Half - Fits AA32046H assembly	11.89
A22884H	9	Tire - Replaces A22884, A84050, GD1086	23.95
AA32046H	20	Complete Gauge Wheel Assembly	61.95

Disc Opener Assembly

Fits JD, Max Emerge, Max Emerge 2, Kinze and White Planters
Why Pay More for the Same Quality!

- Quality American made blade
- 11 Gauge heavy duty blade
- 8 Gauge Heavy Duty Hub!
- Braced center hub for extra strength
- Chromate Plated Rivets!
- Heavy Duty Fafnir Bearing



Part #	Avg. wt.	Description	Price \$
AA20242H	6 lbs	JD Seed Disk Opener	23.95
GA8324H	6 lbs	Kinze "Super Thick" Seed Disk Opener	26.75

XP Seed Disc Opener Assembly

- 3.5mm
- 15" Double Row Bearing
- Dust Cap

Weight 7 lbs.

Part #	Price \$
AA65248H	29.95



Depth-a-matic

- Maintains the average depth between both gauge wheels for a more constant depth.
- Averages the depth between the two gauge wheels.
- Improve Depth Control for Your JD Planter



Part #	Wt	Price \$
DC7000		31.95
DC7200		39.95

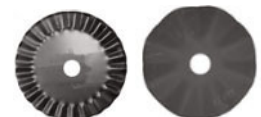
COULTER BLADES



*25 wave have very good penetration and cutting action. Effective at higher speed and leaves finer soil particles behind.

*12 wave has good penetration and is effective at lower speeds.

*8 wave have fair penetration and very good soil tilling action. Leaves medium sized particles behind.



Part #	# of Waves	Wave Size	Diameter	Center	# Holes	Size	Bolt Center	Application	Price \$
B1626716	NA	Bubble	16"	2"	6	7/16	3 1/2"	JD7000/7100	34.80
8341626716	8	1"	16"	2"	6	7/16	3 1/2"	JD7000/7100	27.95
13341626716	13	1"	16"	2"	6	7/16	3 1/2"	JD7000/7100	30.92
83416218512	8	1"	16"	2 1/8"	5	1/2	4 3/4"	JD7200/7300	27.95
878164412	8	7/8"	16"	4"	4	1/2	5 1/4"	Yetter/Kinze/White	25.95
1334164412	13	3/4"	16"	4"	4	1/2	5 1/4"	Yetter/Kinze/White	27.95
2571172	25	7/8"	16"	4"	4	1/2	5 1/4"	Yetter/Kinze/White	41.92
2571179	25	7/8"	18"	4"	4	1/2	5 1/4"	Yetter/Kinze/White	33.58
1234162638	13	1"	16"	2"	6	3/8	3 3/8"	Old Kinze/New Idea	30.62

John Deere - Kinze

Planter Gauge Wheel Arm Kit

Replace your worn gauge wheel arms with this simple easy to install kit.

- Exclusive O-ring design insures grease stays in and dirt stays out
- Precision ground bushing insures perfect fit + or - .002

Each planter arm kit (per side) contains:

	Part Number	Description	Price \$
-New Arm			
-Threaded Bushing	AA41968KT	7000 7100 7200 7300 1760 1780	24.99
-Mounting Hardware	AA54179KT	1700 1710 1720	26.95
	A79648KT	1720 XP Series	29.95



Closing Wheels



John Deere 7000 Closing Wheel Lists for over \$44 - Save Big with T.H.E.



Part #	Wt	Application	Price \$
AA33297H	6	7000 7100	29.75
AA39968H	5	1700 Series MaxEmerge Plus XP & Pro 1530/35, Kinze 3000	31.95
AA34211H	5	7200 7300 1760/80 MaxEmerge II up to 1996	31.95
PWA2135	3	2 x 13 - Single Stem Bearing - Drills	40.93
AN130058H	5	4 x 12 - Smoth Crown Tire - Single Stem Bearing - Drills	28.83

Furrow V Slicer

- Mounts simply between double disc openers.
- Leaves a V in the soil for perfect seed placement.
- Made of chrome alloy, for extra long life.



Part #	Wt	Description	Price \$
1785H	2	Maxi-Merge and Kinze with curved seed tube	10.25
1985H	2	1720 XP Series	23.95
1885H	2	Kinze 3000 Series	37.95

Tungsten Scrapers

Part #	Description	Price \$
AA62559KTH	Scraper Kit - 2 arms 2 scrapers, 2 clips and spring	24.95
AA62559H	LH & RH scraper and 2 clips	18.95
A50047H	Spring for tungsten scraper	2.21



Guard Scraper



Part #	Wt	Description	Price \$
A41692H	2	7000 thru 7300 Kinze Except 3000 Series	5.50
AA54755H	2	Same as Above - includes seed tube holder	8.33
A80203H	2	Xp Pro with Seed tube holder (curved tube)	11.95

Replacement Seed Disk Scraper



Part #	Wt	Description	Price \$
AA37221H	1	7200, 7300 - Rotating scraper only	4.95
AA35734H	1	7200, 7300 - Right Hand Scraper Arm	2.95
AA35735H	1	7200, 7300 - Left Hand Scraper Arm	2.95

Scraper Assembly

Replacement assembly for TruVee™ Opener.

Part #	Wt.	Description	Price \$
AA26443H	.5	Right Hand - Replaces A2012R, AA26443	3.49
AA26444H	.5	Left Hand - Replaces A2012L, AA26444	3.49



Closing Wheel Tires and Rims



Part #	Dimension	Description	Price \$
PW110	1 x 10	Press wheel tire JD750 No-Till Drill and Tye	5.36
A22325H	1 x 12	JD press and closing tire for 8000 and 750 drills	4.98
A45576H	1 x 12	Plastic wheel 1/2 for drills	8.52
PW213	2 x 13	Smooth Crown Tire - Drills	7.98
412	4 x 12	Smooth Crown Tire - Drills	12.24
N130045H	4 x 12	Yellow wheel 1/2 for gang press wheel	6.08
A22884H	4.5 x 16	Gauge wheel tire for JD750 drill	23.95
A22780H	4.5 x 16	Yellow wheel 1/2 for JD750 drill	11.89

Closing Wheel Arms



Part #	Wt	Description	Price \$
GA8322H	6	Kinze - 93 and later with bolt on closing wheels	28.95
GB0239H	.25	Eccentric Bushing - Fits above	2.95
GB0282H	.25	Hex Step Bushing - Fits above	1.79
AA31217H	7	7000 7100	42.65
AA37552H	8	7200 7300 7340	38.75
A69141H	9	Plus Pro Xp 1530 1535	36.56

Closing Wheel Trash Guards

- Helps prevent trash from plugging the closing wheels

- Mounting hardware include - Easy to install



Part #	Wt.	Description	Price \$
TG1	2	Trash Guard and hardware	13.50

John Deere - Kinze

Fiberglass Seed Box Toppers

- Adds one bushel of capacity
- All toppers made of fiberglass
- Easy to install - Still use your original lid



Part #	Wt	Description	Price \$
B11	3	7000, 7100 - Yellow	59.95
B11JDF	4	7200, 7300	59.95
B11KZ	3	Kinze 2000 - White	59.95
B11KZ1	3	Kinze 3000 Series - White	59.95

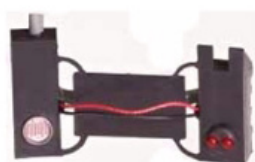
All Out Insert



- Easy and permanent install
- Increases the slope at the bottom so that all the seeds will easily flow out

Part #	Wt	Description	Price \$
A01	2	7000, 7100 - Yellow	26.50
KZA01	2	Kinze 2000 - White	26.50

Standard Population Sensors

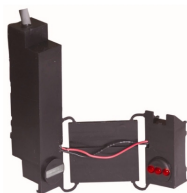


- Standard sensors for population monitors built prior to 1986
- Sensors have two lights

Part Number	Description	Price \$
JD1003W	7000, 7200 - 3 wire end	39.95
JD101C	7000, 7200 - Cannon end	40.65
JD102WP	7000, 7200 - Weather Pak end	40.65

High Rate Population Sensors

- High Rate Population sensor built 1986 and after
- Sensors have three lights



Part Number	Description	Price \$
JD1003WNS	7000, 7200 - 3 wire end	65.54
JD101CNS	7000, 7200 - Cannon end	76.50
JD102WPNS	7000, 7200 - Weather Pak end	67.95

Monitor Sensor Brush

Helps keep sensor clean and functioning properly



Part Number	Description	Price \$
AA36824H	Monitor Sensor Brush	3.99

Replacement Seed Tubes

- Seed tube - less sensor
- Factory predrilled holes for fast mounting



Part #	Wt	Description	Price \$
A25925H	.4	7000, 7100	3.99
A48302H	.4	7200, 7300, 7340	3.95
A56784H	.3	1700 - Large Monitor Hole	5.95

Seed Tube Guard

- For Use with curved seed tube A56784H



- Bracket welded to seed guard
- Replaces JD # A61577

Part #	Wt	Description	Price \$
A61577H	1	1700 Series with curved seed tubes	8.25

Precut Planter Chains



- The first two or three digits represent the number of links, the last series of numbers is the pitch of the chain.

Avg Weight 2 lbs each

Part #	Application	Description	Price \$
PC11041	7000, 7100	Herbicide/insecticide	6.42
PC9841	7000, 7100	Seed Meter Drive	5.24
PC442040	7000, 7100	Seed Transmission	5.50
PC382040	7000, 7100	Countershaft to seed Transmission	5.03
PC512040	7000, 7100	Dry fertilizer Transmission	6.93
PC532050	7000	Wheel Drive 4 row wide & 6 narrow	9.88
PC562050	7000	Wheel Drive 6 wide 8 & 12 narrow	9.58
PC692050	7000	Wheel Drive 12 wide folding to 24 narrow	15.95
PC502050	7100	Wheel Drive 1979 & up	8.39
PC692050	7000	Wheel Drive 7000 Conservation	15.95
PC9340	7200, 7300	Liquid or dry Fertilizer Transmission	6.99
PC10441	7200, 7300	Herbicide/insecticide	5.73
PC10541	7200, 7300	Seed Meter Drive	7.87
PC11241	7200, 7300	Vacuum Meter Drive	6.25
PC8640	7200, 7300	Transmission Drive	8.65
PC10540	7200, 7300	Countershaft to seed Transmission	6.99
PC9340	7200, 7300	Fertilizer Transmission	6.99
PC11350	7200	Wheel Drive 7x7 frame 4 wide 4 & 6 narrow	15.95
PC542050	7200	Wheel Drive 5x7 frame 4 wide 4 & 6 narrow	12.75
PC11650	7300, 7340	Wheel Drive	13.11
PC11350	1750 Max-merge Plus	Wheel Drive 7x7 frame 4 wide 4 & 6 narrow	15.95
PC542050	1750 Max-merge Plus	Wheel Drive 5x7 frame 4 wide 4 & 6 narrow	12.75
PC10540	1770 Max-merge Plus	Countershaft to Seed Transmission	6.99
PC14050	1770 Max-merge Plus	Wheel Drive 12 wide 16 & 24 narrow	23.85

John Deere - Kinze

Keeton Seed Firmer



- The right kind of poly to hold its shape, withstand abrasive soil and keep the proper amount of tension over the seed.
- The right "attack" angle to properly guide the seed to the trench.
- The right shape to protect the "V" of the seed trench and to prevent plugging.

Part #	Planter	Description	Price \$
P115K	Kinze, old style	Gold - No Tubes	33.50
P201K	Kinze 3000	Gold - Dual Tubes	34.50
P100H	JD, Kinze, White	Original Tube Mount - no Tubes	33.50
P100T	JD, Kinze, White	Original Tube Mount - Single Liquid Tube	33.95
P115D	JD, Old Style	Gold Two Piece Mount - no Tubes	34.50
P201D	JD	Gold, Two Piece Mount - Dual Tubes	34.50

Plastic Idlers



High quality replacement idlers for much less
0.1 lb each

Part #	Description	Price \$
A22838H	Max-Emerge Planter Unit Plastic idler for seed meter drive. Replaces A22838	0.99
B30968H	Max-Emerge Planter 7000 and 7100 Plastic idler for liquid or dry fertilizer drive, seed transmission drive, insecticide or herbicide drive. Replaces B30968 or B30969	1.45
A22628H	Max-Emerge Planter 7000 and 7100 Plastic idler for drive wheels. Replaces A22628.	1.44

Idler Spacer Bushing

Weight 0.1 lb.



Part #	Description	Price \$
B30966H	Idler Spacer bushing - Replaces #B30966	1.55
B30967H	Idler Spacer bushing - Replaces #B30967	1.55
N120831H	Idler Spacer bushing - Replaces #A22639 or #N120831	1.25

Rubber Spacer

•Replaces A20337 - Weight 0.2 lb each



Part #	Description	Price \$
A20337H	Seed drive transmission spacer	3.36

Notched Covering Discs



• Disc Assembly includes Cap

Weight 2.5 lbs each

Part #	Description	Price \$
ND6000H	8" Left Hand Assembly	24.95
ND6001H	8" Right Hand Assembly	24.95

Drive & Wheel Frame Bearings



Part #	Wt	Description	Price \$
AA22099H	1.5	Countershaft Drive with cotter pin	13.99
AA22098H	1.5	Countershaft Drive with set screws	14.77
AA22097H	.5	Transmission - 7/8" hex bore	10.69
AA22558H	1	Wheel Frame - 7/8" bore with set screws	14.05

Max-Emerge™ Planter Unit Bearing with Sprocket



Part #	Wt.	Description	Price \$
AA30654H	1.5	7000, 7100 - Standard 19 tooth	19.08
GA1720H	1.5	Late Kinze models - 7/8" bore	19.59
AA35645H	1.5	7200, 7300, 1700, 1760, 1780 Maxemerge 2, Maxemerge XP - Wide 19 tooth	19.95
AA36212H	1.5	7200, 7300, 1760, 1780 Maxemerge 2, 1700, 7340 Maxemerge 2 - Narrow 19 tooth	19.95

Excentric Bushings for Tail Section



Get perfect alignment with these quick excentric bushings

- Adjusts in seconds
- locks securely
- Quick repair for worn tail shafts

Part #	Wt	Description	Price \$
MBEB275	.5	7000 - 1"	3.95
A48430H	.5	7200, 7300, 7340 - 1 1/2"	4.14

John Deere - Kinze

Mechanical Acre Counter

- Easy to Read
Easy to Mount
- Constant Mesh Gears
 - Reset Type Counter
 - Direct Drive
 - Field Tested
 - Full Instructions Included
- Guaranteed for 6 Months Against Defective Material and Workmanship



MADE IN THE USA

Weight 1.5 lbs.

Part #	Application	Price \$
2502	Most Kinze 2000 Series	69.95
2305	7000, 7100, 7200, 7300, 1700, 1710, 1720 & 1750	69.95

No-Till Marker Weight



Makes it much easier to see the marking furrow when in no-till or similar high trash conditions

Part #	Wt.	Description	Price \$
SM1JD	15	John Deere Style	34.95

Notched Marker Kit

- Highly visible mark prevents skips
- Notched 18" discs improve penetration, allowing you to plant in tough conditions
- Sharp-edged, concave notched discs cut and part residue
- Heavy duty 5" hub, rated at 1250 lbs
- Heavy duty Timken bearing
- No-till flexibility to your existing planter markers



Weight 52 lbs

Part #	Price \$
213177MK	149.95

Fertilizer Box Toppers



- Can add up to 400 lbs capacity
- Made from rugged fiberglass
- You can still use your original lid
- Can be shipped U.P.S.

Weight 70 lbs.

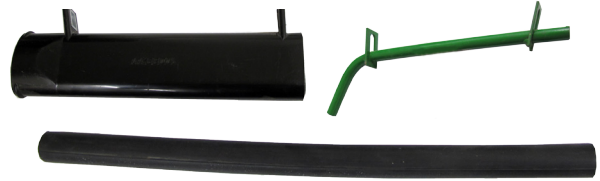
Part #	Application	Price \$
FT1	7000, 7100, 7200, 7300	168.95
FT1K	Kinze Planters	168.95

Fertilizer Disc Opener Assembly



Part #	Wt	Description	Price \$
AA27458H	7 lbs	13.5" - 7000, Max Emerge 2 Replaces AA27458	33.25
AA39004H	6 lbs	Heavy Cast Hub Max Emerge Plus	29.57
B29400H	.5 lbs	Dust cap for assemblies listed above	1.99

Fertilizer Tubes and Spouts



Part #	Wt	Description	Price \$
AA38905H	.5 lbs	Poly Fertilizer Tube - Replaces AA38905	12.75
A35778H	.5 lbs	Liquid Fertilizer Tube - Replaces A35778	10.75
AA23113H	.5 lbs	Liquid Fertilizer Spout - Replaces AA23113	10.99
B35601H	.5 lbs	Dry Fertilizer Spout - Replaces B35601	10.30

Fertilizer Scrapers



Part #	Wt	Description	Price \$
A24085H	.5 lbs	Opener outside scraper - Replaces A24085	3.23
B35913H	.5 lbs	Opener inside scraper - Replaces B35913	3.54

Insecticide Feed Wheel Parts



Part #	Wt	Description	Price \$
AA22977H	1 lb	Feed Wheel - Replaces AA22977	12.48
AB12703H	1 lb	Lock Pin - Replaces AB12703	4.36
AA29122H	1 lb	Housing - Replaces AA29122	16.74

750 Drill Parts



Part #	Wt.	Description	Price \$
N214190H	12 lbs	Disk couler 18" diameter	31.90
AN213544H	2.5 lbs	Hub w/races	35.63
JD8535HKT	1 lb	Bearing Kit (2 bearings) used on 1 x 10, 1 x 12 press wheel (below Ser # 5281)	14.35
AN142670H	.75 lb	Bearing (2 used on 750 Ser # 5282 and up)	4.85
AN142670HKT	.75 lb	Bearing Kit, 2 bearings and 1 seal fits late model cast wheel marked N218791	20.61
AA38447H	1 lb	Press Wheel 10 x 100	19.95
N280446H	7 lb	Right Hand Seed Boot	25.95
N280447H	7 lb	Left Hand Seed Boot	25.95
A22884H	.5 lb	Gauge Wheel Tire 4.5 x 16	23.95
A22780H	.5 lb	Gauge Wheel Half 4.5 x 16	11.89
AN212132H	.5 lb	Gauge Wheel Bearing	22.13
N219046		Long Drill Tube	13.38
N219047		Short Drill Tube	19.44
GD1	1 lb	Spring Grain Drill Scratcher Tooth 11" Long	2.39
JD2E1	.8 lb	Spring Grain Drill Scratcher Tooth 8" Long	2.53

Oliver - M-M - White

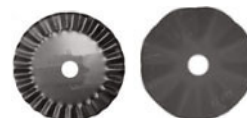
COULTER BLADES



*25 wave have very good penetration and cutting action. Effective at higher speed and leaves finer soil particles behind.

*13 wave has good penetration and is effective at lower speeds.

*8 wave have fair penetration and very good soil tilling action. Leaves medium sized particles behind.



Part #	# of Waves	Wave Size	Diameter	Center	# Holes	Size	Bolt Center	Application	Price \$
878164412	8	7/8"	16"	4"	4	1/2	5 1/4"	Yetter/Kinze/White	25.95
1334164412	13	3/4"	16"	4"	4	1/2	5 1/4"	Yetter/Kinze/White	27.95
2571172	25	7/8"	16"	4"	4	1/2	5 1/4"	Yetter/Kinze/White	41.92
2571179	25	7/8"	18"	4"	4	1/2	5 1/4"	Yetter/Kinze/White	33.58

Keeton Seed Firmer



- The right kind of poly to hold its shape, withstand abrasive soil and keep the proper amount of tension over the seed.
- The right "attack" angle to properly guide the seed to the trench.
- The right shape to protect the "V" of the seed trench and to prevent plugging.

Part #	Planter	Description	Price \$
P100H	White	Original Tube Mount - no Tubes	33.50
P100T	White	Original Tube Mount - Single Liquid Tube	33.95

Furrow V Slicer

- Mounts simply between double disc openers.
- Leaves a V in the soil for perfect seed placement.
- Made of chrome alloy, for extra long life.



Part #	Wt	Description	Price \$
1685H	2	White 6100, 8100	20.95

No-Till Marker Weight



Makes it much easier to see the marking furrow when in no-till or similar high trash conditions

Part #	Wt.	Description	Price \$
SM1WH	15	3 Bolt - White Style	34.95

Gauge Wheel Tires



Part #	Wt	Description	Price \$
A22884H	9	White 5000, 6000	23.95

Disc Opener Assembly

Fits JD, Max Emerge, Max Emerge 2, Kinze and White Planters
Why Pay More for the Same Quality!

- Quality American made blade
- 11 Gauge heavy duty blade
- 8 Gauge Heavy Duty Hub!
- Braced center hub for extra strength
- Chromate Plated Rivets!
- Heavy Duty Fafnir Bearing
- Fertilizer Has Heavy Cast Hub



Part #	Wt	Description	Price \$
852063H	8	15" 6000 Series Disc Opener with cap	31.95
852628H	6	13.5" 5100, 5700, 6000 Fertilizer Opener with cap	31.95

Disc Opener Bearings



Part #	Application	Price \$
552202P	White	8.13

Mechanical Acre Counter

Easy to Read
Easy to Mount
• Constant Mesh Gears
• Reset Type Counter
• Direct Drive
• Field Tested
• Full Instructions Included
Guaranteed for 6 Months Against Defective Material and Workmanship



MADE IN THE USA

Weight 1.5 lbs.

Part #	Application	Price \$
2200	5100, 6100	69.95
2201	3400, 5400	69.95

Prices are subject to change, call for availability & price

Misc Grain Drill & Planter Manufacturers

Disc Opener Blades/Assemblies

Part #	Wt	Description	Price \$
107054S	6	Great Plains - Replaces 107-135, 107-133	30.24
M1	6	Marliss drill assembly	37.18
T1	5	13.5" assembly - Tye	34.55
CB16N	5	16" notched blade - Crust Buster 3400, 4000	33.13
CB16S	6	16" smooth blade - Crust Buster 3400, 4000	27.48



Press & Gauge Wheel Parts

Part #	Description	Price \$
PW213	2 x 13 Tire - Crust Buster, Great Plains, Tye, UFT, Lilliston, Melrose	7.98
PWA2135	2 x 13 Press wheel assembly single stem bearing - Great Plains UFT, Lilliston, Melrose	40.93
PWA110	1x 10 Press Wheel Assembly - Tye	
526768RH	White wheel 1/2 for Tye, Great Plains, UFT, M&W and Marliss	6.79
412	4 x 12 Smooth Crown Tire - Tye	20.95
885154BH	Press wheel bearing fits Great Plains, Lilliston, Melrose, UFT	6.55
203KRR2	Press wheel bearing - (1) used Tye 1 x 10 wheel (2) used Tye 2 x 13 wheel	4.95



Disc Opener Bearings



Part #	Application	Price \$
822003C	Late Tye, Crust Buster, Great Plains	8.64
552202P	Early Tye	8.13
702020	M & W, Marliss	11.40

Coulter Blades



*25 wave have very good penetration and cutting action. Effective at higher speed and leaves finer soil particles behind.

*13 wave has good penetration and is effective at lower speeds.

*8 wave have fair penetration and very good soil tilling action. Leaves medium sized particles behind.



Part #	# of Waves	Wave Size	Diameter	Center	# Holes	Size	Bolt Center	Application	Price \$
1278184412	12	1"	18"	4"	4	1/2	5 1/4"	Great Plains/Yetter/Krause	31.25
1234174412	13	1"	17"	4"	4	1/2	5 1/4"	Great Plains/Yetter/Krause	25.75
81174412514	8	1"	17"	4"	4	1/2	5 1/4"	Great Plains/Yetter/Krause	37.08
2558174	25	5/8"	17"	4"	8	1/2	5 1/4"	Wil-Rich/Great Plains	37.35
1378173116	13	1"	17"	3 11/16"	4	1/2	5"	DML/Marliss/Tye	36.95
1234162638	13	1"	16"	2"	6	3/8	3 3/8"	Old Kinze/New Idea	30.62

80/20 Talc-Graphite Mix



- Designed for treated seed
- Used in both gravity flow and air planters
- Reduces moisture issues
 - increases efficiency
 - Lubricates seed and equipment
- Non toxic and high purity for less meter wear
- Use 4-6 oz. when hopper is filled with seed.

Powder Graphite



- Increases plant population
- Easiest way to apply seed-flow lubricant
- Helps prevent "bridging" of seeds in the planter
- Helps seed flow through high-speed planters
- Reduces wear on plates

Talc



- Increases plant population per acre
- Reduces moisture created by vacuum planters
- Helps seed flow smooth & even
- Reduces wear on vacuum meter parts

Part #	Description	Price \$
EZTG	8 lb container	25.93

Part #	Description	Price \$
EZG1	1 lb bottle	4.65
EZG5	5 lb container	15.95

Part #	Description	Price \$
EZT	8 lb container	17.10

Don't see what you need?

CALL US!

We can likely find what you need!

We can search for used parts as well!

Prices are subject to change, call for availability & price

Universal GRAIN DRILLS

Drill Chains



All Welded Rings and Links have a Electro-Galvanized Finish.
Weighs 2 lbs.

Part #	Price \$
522550152	4.15

Universal Drill Tubes

Part #	Tube	Price \$
U100	Length 8" to 26" Fits 90% of all drills and planters 1" ID top 1 1/2" ID bottom	11.30
GP003	Fits Great Plains drills Replaces 816-003C	6.91
SD50	Length 19" to 50" 2 1/8 inlet 1 3/8 outlet	19.56



FERTILIZER

Hydra Fold Auger

Parts

Part #	Wt.	Description	Price \$
TEL16G	65	Electric cont. 16' telescoping spout for wagon augers	642.10
TEL16T	65	Electric cont. 16' telescoping spout for TRUCK augers	642.10
TEL7	30	7' downspout adjusts from 4' to 7' no electric shutoff	124.95

Truck Auger

Part #	Price \$
HydrafoldTA614	1935.95
HydrafoldTA616	2095.10
HydrafoldTA814	3085.72
HydrafoldTA614P	2198.95
HydrafoldTA616P	2299.66
HydrafoldTA814P	3441.46

***Part numbers with P at the end are augers that have poly flighting.**

Wagon Auger

Part #	Price \$
Hydrafold611	1443.25
Hydrafold614	1571.95
Hydrafold616	1740.95
Hydrafold814	2055.15
Hydrafold611P	1637.50
Hydrafold614P	1835.70
Hydrafold616P	2047.20
Hydrafold814P	2411.14

Advise us as to the wagon and size of the opening and if you want poly lining. Turn your Hydrafold Auger on and off by a flip of the switch at the discharge.

SENSORS/MONITORS

Grain Drill Sensors



Note: Certain drills have different size seed tubes. Please know the tube size before ordering.

Weight 1 lb.

Part #	Description	Price \$
DPS1003W	3 wire end	52.50
DPS101WP	Weather Pak end	52.50
GD1003W	Infrared high speed 3 wire end	85.50
GD101WP	Infrared high speed Weather Pak end	85.50

Sensor 1 Seed Flow Monitor



- 1-16 Row conventional monitoring
- Planter or drill capabilities
- Detects blocked seed tubes
- Extra loud alarm volume

Part #	Price \$
PMSF	750.00

Sensor 1 Graphic Display Monitor



- Sensor 1 graphic display monitor
- 1-24 Row monitor system
- Gps capabilities
- Displays average population, total pop, seed spacing, speed total/field acres, travel distance
- Hopper sensor capability

Part #	Price \$
PM2005	1350.00

Sensor 1 Population Monitor



- 1-16 Row population monitoring
- Displays average population, seed spacing/inch, speed, total acres
- Hopper sensor capability

Part #	Price \$
PMPOP	950.00

Sensor-1 GPS

OEM



This 12-parallel-channel, WAAS-enabled GPS receiver is available in CMOS-level serial or full-speed versions and comes with an integrated magnetic base. The Sensor-1 GPS will fully replace most types of radar and comes with an integrated magnetic base. No subscription necessary. Connect your Sensor-1 GPS to almost everything, including DICKEY-john, John Deere, Raven, Micro-Track and more.

Part #	Application	Price \$
DS-GPSM-D1	Amp End - Dickey John	299.00
DS-GPSM-MT1	Weather Pak End - Micro-Trak MT3000	299.00
DS-GPSM-CT1	Square Deutch End - Caterpillar	299.00

Mushroom



The Sensor-1 GPS "Mushroom" can be used to provide GPS signal to any planter or drill population monitor, as well as a replacement speedometer in a farm truck, antique tractors, on ATV's, or nearly anywhere else for speed when paired with the Digital Speed Display.

Part #	Description	Price \$
DSGPSMD1	1hz	395.00
DSGPSMD5	5hz	495.00

These mushroom display systems come stock with a 4-pin AMP plug.